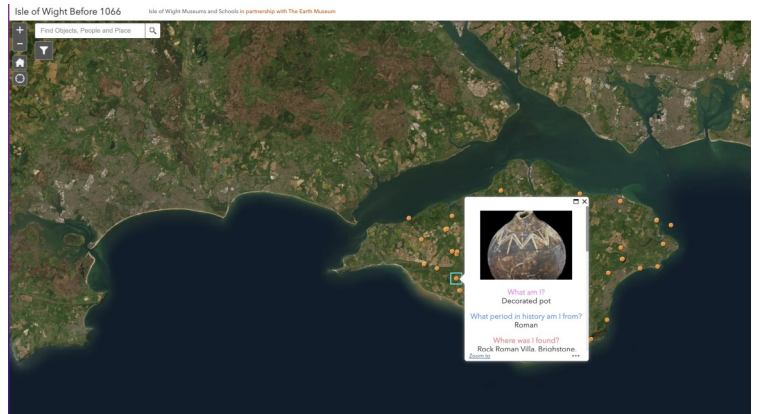


Isle of Wight Museums & Schools is a partnership of museums and cultural organisations, working together to support heritage education.

## Isle of Wight Schools Big History Map Project

The Earth Museum is looking for 10 schools to create a new digital heritage map for the Island. This will be a map populated with objects chosen by your pupils from a range of the Island's great museums and illustrated with their drawings.

It's a great opportunity for learners to engage with the unique history and geography of their Island home, whilst developing their skills with Geographical Information Systems, spreadsheets, data, and coordinates!



The project includes a teacher CPD session and a subsidised visit to one of the museums, funded by Museums and Schools. Places are limited and allocated on a first come, first served basis so don't delay getting in touch to find out more: [janet.owen@theearthmuseum.co.uk](mailto:janet.owen@theearthmuseum.co.uk)

## Galvanising young people's interest in Maritime Heritage

The Classic Boat Museum is applying for funding from the National Lottery Heritage Fund to conduct a maritime heritage oral history project. It would like to offer opportunities to 6th formers and young people under 25 to participate. Training will be given by a professional oral historian in interviewing techniques - a skill that is useful in many other fields. Young people will interview older people so that significant maritime heritage will not be lost, and generate important intergenerational links and a sense of belonging in the community.



For more information contact: [victoria@maritimeisle.org](mailto:victoria@maritimeisle.org).

## Isle of Wight: Dinosaur Island

Discover the Island's rich fossil heritage in a series of new videos from the Natural History Museum, featuring staff and exhibits from Sandown's Dinosaur Isle Museum.

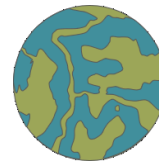
[Watch the full series on YouTube](#)



## The Earth Museum: World Heritage on your doorstep

The Earth Museum has opened an office and gallery in Yarmouth. The current mini-exhibition (open Wed and Thurs, 2-4pm, until the end of October) is entitled 'A Special Island' and marks the Isle of Wight as an internationally recognised Island, a UNESCO Biosphere.

Find out more at [theearthmuseum.co.uk](http://theearthmuseum.co.uk).



THE EARTH  
MUSEUM

## News from the IW Cultural Education Partnership

Including representatives from education, arts, heritage and cultural organisations, the IWCEP supports children and young people to fulfil their creative potential and access high-quality cultural experiences.



**'Inspiring Young Lives' Cultural Education Conference:** The next IWCEP conference will take place on Thursday 16th November from 9.30-4.30 at Quay Arts. Tickets sold out extremely quickly last year so don't delay [booking your FREE place](#).

**Creative Careers Week 2024:** The IWCEP's projects for the new year include A Creative Careers Week 5th to 9th of February 2024. A programme of Creative Careers events to be held in schools, at industry locations across the Island and online in February 2024. Events will include workshops, open doors sessions, talks, tours, hands-on try-outs and online resources, targeted at young people in Primary, Secondary and post 16 settings as well as CPD for teachers.

For more information about these events and the IWCEP, contact: [claire@islandcollection.org.uk](mailto:claire@islandcollection.org.uk)

## New Museums & Schools Brochure Available Now!

Our updated Museums and Schools brochure will soon be arriving in schools around the island but you can check it out online now: [iwcep.co.uk/wp-content/uploads/2023/09/Museums-and-Schools-Brochure-2023-24.pdf](http://iwcep.co.uk/wp-content/uploads/2023/09/Museums-and-Schools-Brochure-2023-24.pdf)

You can also use our online catalogue to filter visits and workshops by Key Stage, location and type to find the opportunity that's right for your school. Visit: [iwcep.co.uk/ms-workshops/](http://iwcep.co.uk/ms-workshops/)



## Last space for Free Rural Life Workshop



There is just one remaining Rural Life workshop available to book for FREE.

Discover what daily life might have been like for a child living in the Isle of Wight countryside during Victorian times. Original artefacts, replica costumes and photographs from Island photographer James Dore, are used to explore aspects of daily life for a rural child. The workshop is designed for delivery at the Museum of Island History but can also be offered in school. It is suitable for Key Stage 2 but can be adapted for Key Stage 1.

For information and to book contact: [estelle.baker@iow.gov.uk](mailto:estelle.baker@iow.gov.uk)